



SIKA AT WORK

Roofing & industrial flooring for Real Tobacco S.A., Kilkis, Greece

Roofing: Sikaplan® G-15

Flooring: Sikafloor® MultiDur ES-20 & Sikafloor® MultiDur ES-14 N



BUILDING TRUST



REAL TOBACCO S.A., KILKIS, GREECE



PROJECT DESCRIPTION

Real Tobacco S.A. is a cigarette manufacturing company established in 2017. The head office of the company is located in Kilkis and its purpose includes, inter alia, the industrial processing of tobacco in Greece and abroad, in any form and manner for the manufacture of industrial tobacco products (cigarettes, cigars, etc.), the marketing, distribution, import and export of tobacco leaves and industrial tobacco products in Greece and abroad and the manufacture and marketing of non-tobacco products used for the manufacture of non-industrial tobacco products.

The 30.000m² building of the Real Tobacco S.A. factory is situated on a plot of 100.000 m² in the heart of the leaf tobacco-growing region of Northern Greece, in the area of Kilkis. It is a mere 20 km from the port of Thessaloniki, with direct access to Old National Road "Kilkis – Thessaloniki" and the new highways connecting Thessaloniki with the ports of Piraeus (Athens) and Igoumenitsa, and with neighboring countries Bulgaria, FYROM and Turkey.

Implementing the latest "state-of-art" technology Real Tobacco S.A., is specialized in manufacturing of high-quality cigarettes packed in new innovative "Multilock" (hermetical, re-closable) packs and is the only of its kind, worldwide, capable of manufacturing several different formats of cigarettes, all in "Multilock" packs.

Its's portfolio include a range of tobacco products (Tabacchiera, Organza, Legate, Forman, Excelsior, Boudoir, Stella) distributed in various countries.

The unique products manufactured by Real Tobacco SA are a combination of excellent tobaccos, tradition, innovation and modern technology. Fully equipped quality assurance laboratory and specialized software systems, as well as our qualified personnel guarantee the high quality of the finished products.

PROJECT DEMANDS

The Real Tobacco S.A. factory was planned to operate in an existing former factory building that had to undergo serious restoration works in order to re-open as a "state-of-art" production facility.

The six brand new, high-speed production lines and modern infrastructure in combination with state-of-the-art technology and software solutions should be established in a fully functional and safe environment, in order to enable the targeted level of flexibility and efficiency set.

The main restoration works included roof waterproofing and new industrial floor application. All selected products and systems should be in line with specifications, aiming to facilitate smooth operation and programmed productivity in conjunction with safety at work and minimal "dead" times for maintenance works.

SIKA PROPOSAL

A floor for the specific type of production area had to meet both high hygiene requirements, be easy to clean and also feature high resistance against mechanical stresses. In the tobacco industries, a clean floor is obviously an essential requirement in order to provide a healthy working environment and forms the basis for a product chain to produce high quality products that meet the required standards in their field. Therefore, there is always a Sika system to satisfy needs of all types.

Sika is locally present in more 101 countries, which allows us to bring our customers not only proven roofing products, but additional services, such as wind load calculations, application trainings, CAD details, BIM objects and technical consultations, guarantees, e.t.c.

SIKA SOLUTION

Roofing: Durability is a key component of sustainability. The longer a product lasts, the better it generally is for the environment, providing its original production and embodied energy create minimal environmental impact. Durability additionally adds value to a property. The highest quality watertight roof nearly always enhances property value. Durability also means low overall cost of ownership. Because of their longevity and durability, Sika membranes are very cost effective over the life of the roof, as they exhibit high resistance against most climate exposure. Maintenance costs are therefore minimal, so owners can have peace of mind.

Therefore, for the total 31.000m² roofing area **Sikaplan® G-15** was applied. **Sikaplan® G-15** is a polyester reinforced multilayer, synthetic roof waterproofing sheet based on premium-quality polyvinyl chloride (PVC) according to EN 13956. It is used for waterproofing of exposed flat roofs via mechanical fastening. Its various advantages include resistance to permanent UV irradiation & all common environmental influences and high water vapour permeability. **Sikaplan® G-15** is hot-welded without use of open flames.

One of the most important advantages in selecting **Sikaplan® G-15** was the fact that the new membrane was applied over the existing, weathered PVC membrane. Therefore, no stripping of old waterproofing system was required, which meant time and money savings. Where necessary, an additional layer of 5cm stone wool was applied.



The selection of **Sikaplan® G-15** was further boosted by the fact that that the membrane is accompanied by various complementary accessories, which enable application of a robust and fully compatible system, that along with Sika engineer's before, during and after application guaranteed a full technical approach.



Sika's technical support included:

- Autopsy on the roof, recording of existing waterproofing status
- Preparation of wind load calculations and support studies
- Estimation of the cost of the technical proposal re-roofing with **Sikaplan® G-15**
- Submission of a final proposal for approval to the general contractor and thus to the project owner
- Technical support throughout the application



Flooring: Sika flooring has more than 50 years experience and is a worldwide technology leader in seamless flooring. Sika has a full range of flooring systems for industrial production facilities and product managing areas. The range of Sikafloor® systems is designed to guarantee exquisite performance even under the most demanding operating conditions and meets all the different exposure requirements, while providing design freedom.

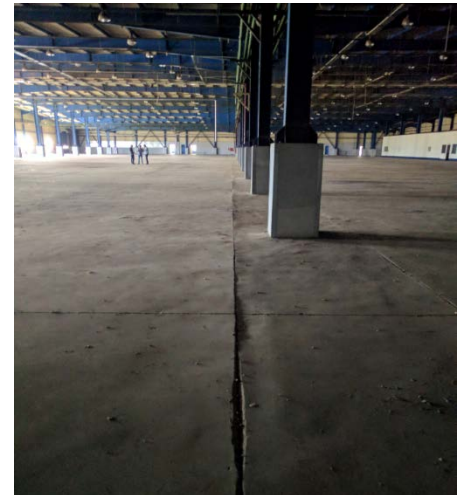
Before final selection, various parameters were evaluated, including autopsy on existing industrial floor & existing status recording.

Sika engineering team then submitted the technical proposal for the substrate preparation, levelling and suitable new epoxy coating system, taking into account all relevant parameters of existing situation and future use.

Flooring for the 9.000m² production & packaging area:

This area was designed to host the production and packaging facilities and there were plans to install heavy equipment that would process and tobacco leaves for the final products.

Therefore strict demands were set about the straightness of the floor. Moreover, in this area forklifts would maneuver, therefore the mechanical stresses would be intense.

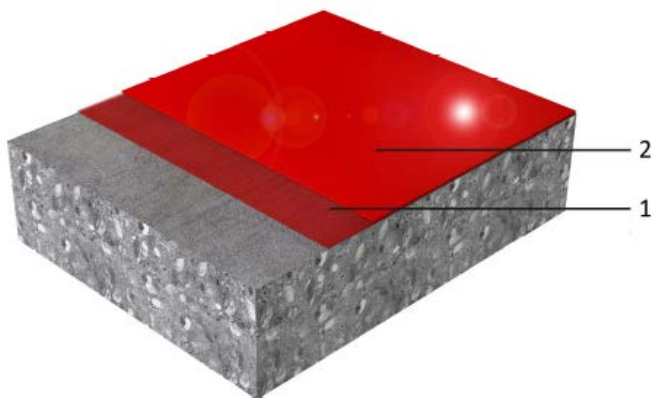


Consequently, the existing flooring system was stripped and the surface was prepared using shot blasting in conjunction with abrasive rotary equipment.

The strictest levelness of the floor was achieved by application of 3x scratch coat layers (resin mortar prepared with **Sikafloor®-161** + quartz sand). This application ensured that the substrate for the subsequent flooring system would be smoothed to the highest possible degree.



Subsequently, the **Sikafloor® MultiDur ES-20** system was implemented. **Sikafloor® MultiDur ES-20** is a color, self-leveling epoxy-based flooring system that forms wear-resistant, smooth, glossy finish with limited maintenance requirements. It is suitable for moderate to heavy stress conditions. **Sikafloor® MultiDur ES-20** forms a smooth gloss finish and is applied at nominal thickness of 1,5–3,0 mm.

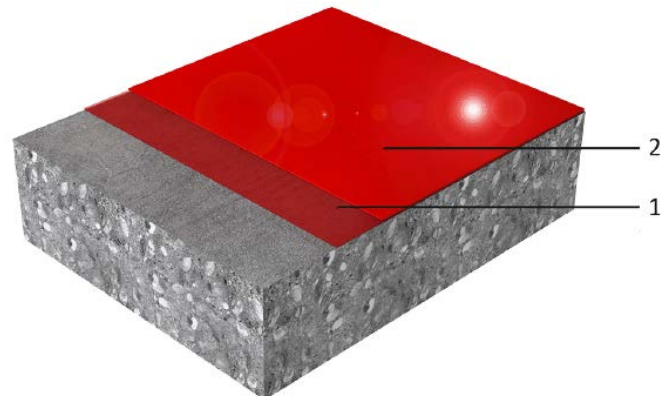


Layer	Product
1. Primer	Sikafloor®-161
2. Wearing coat	Sikafloor®-263 SL N

Its key advantages include special certifications for particles and outgassing, as the final wearing coat, the self-leveling epoxy resin **Sikafloor®-263 SL N** is CSM certified (CleanRoom Suitable Materials).



Flooring for the 5.000m² storage & auxiliary areas: In this area was designed to host the storage activities and would serve as auxiliary space. Therefore, the **Sikafloor® MultiDur ES-14 N** system was selected. **Sikafloor® MultiDur ES-14 N** is a smooth, coloured, rigid, epoxy flooring system, featuring good chemical, mechanical, wear and abrasion resistance. **Sikafloor® MultiDur ES-14 N** forms a gloss finish and is applied at nominal thickness of 0,6–0,8 mm.



Layer	Product
1. Primer	Sikafloor®-161
2. Wearing coat	Sikafloor®-264 N

The final coating of the system, **Sikafloor®-264 N** carries special certifications for particles and outgassing and is CSM certified (CleanRoom Suitable Materials).



Our most current General Sales Terms shall apply.

Please consult the most recent Product Data Sheets prior to any use and processing.



PROJECT PARTICIPANTS:

Owner: **REAL TOBACCO S.A.**

Main contractor: **EKME S.A.**

Roofing sub-contractor: **Anadomo Constructions**

Flooring sub-contractor: **ArtFloor**

Sika Hellas ABEE
15 Protomagias Str.
145 68, Kryoneri
Greece

Contact
Tel.: +30 210 8160600
Fax: +30 210 8160606
www.sika.gr / sika@gr.sika.com

BUILDING TRUST

