

# Sika® Injection-310

Easy-To-Use 1-component, powder based, acrylate based resin, tough-elastic-flexible and for permanent watertight sealing.

## ADVANTAGES

1-C-POWDER BASED

EASY TO APPLY

TIME SAVING AND ECONOMICAL

SOLVENT FREE

EASY TO MIX

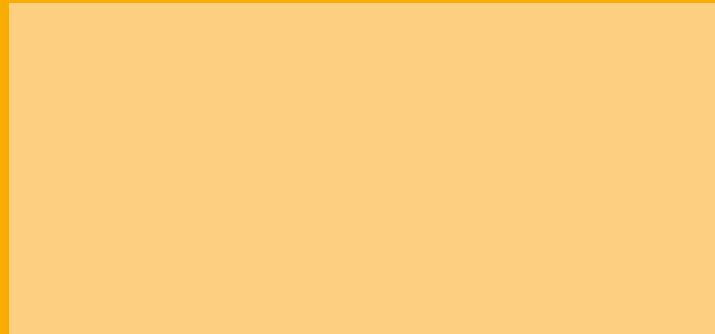
**SUSTAINABLE** - ONLY WATER FOR ACTIVATION AND CLEANING

EXTREME **LOW VISCOSITY**

**WATERTIGHT** UP TO 7 BAR (CERT.)



# KNOW-HOW FROM SITE TO SHELF



© Sika SERVICES AG / WATERPROOFING



SCAN TO VIEW  
PRODUCT VIDEO

### Sika Services AG

Waterproofing  
CH-8048 Zurich  
Switzerland  
Phone +41 58 436 40 40  
[www.sika.com](http://www.sika.com)

Our most current General Sales Conditions shall apply.  
Please consult the most current local Product Data Sheet prior to any use.

BUILDING TRUST



## Sika® Injection-310 EASY-TO-USE 1-C-POWDER-BASED ACRYLATE INJECTION RESIN



# ALL-IN-ONE

BUILDING TRUST



# Sika® Injection-310

EASY-TO-USE 1-C-POWDER-BASED ACRYLATE RESIN FOR FAST AND SUSTAINABLE WATERPROOFING

## USES

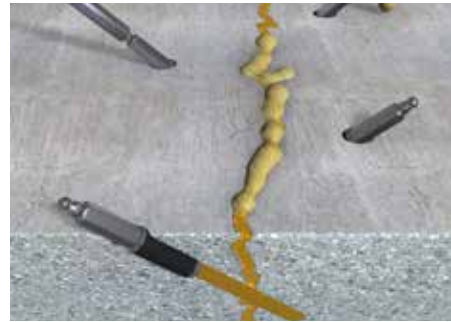
WATERPROOFING  
INJECTIONS FOR  
CRACKS & JOINTS

INJECTION HOSES,  
E.G. SikaFuko®

DAMAGED AND LEAKING SHEET MEMBRANE  
COMPARTMENT SYSTEMS



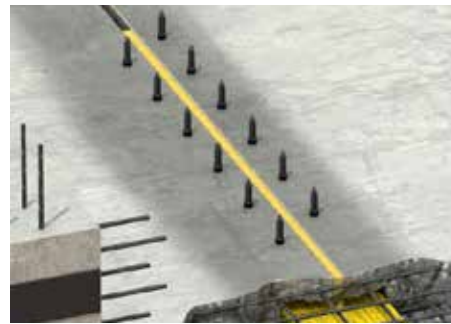
Leaking Cracks /  
Penetrations  
Dry and / or containing  
water



Leaking Membrane  
Compartment Systems



Leaking Expansion  
Joints (movement) and  
Construction / Daywork  
Joints (non-moving)



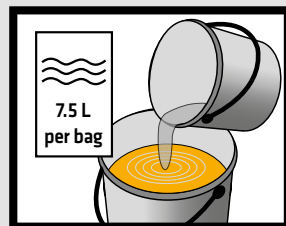
Leaking Wall / Kicker  
Areas



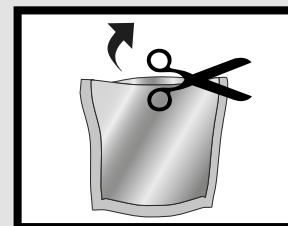
FOR BASEMENTS, LIFT PITS, RETAINING WALLS, CONCRETE SLABS, CAR PARKS ...

## PREPARATION → APPLICATION

1  
Pour 7.5 l water



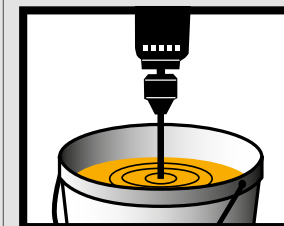
2  
Open bag



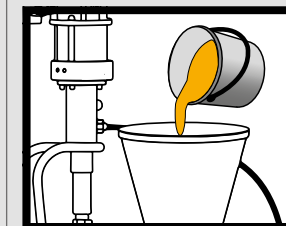
3  
Add powder



4  
Mix for 3 min 900 rpm



5  
Fill pump



6  
Connect & GO!

