



# FLOOR THE WORLD WITH SIKA

SIKA - A GLOBAL PLAYER COMMITTED TO EXCELLENCE

# YOU DON'T BECOME THE WORLD LEADER IN FLOORING WITHOUT DIGGING IN YOUR HEELS

When it comes to flooring systems, we won't compromise. At Sika, we spend unlimited hours, months, even years on a floor system, not stopping until we know it's the best it can be. And apparently, our commitment has paid off - we're the largest manufacturer of high performance, resinous flooring products in the world.

But that doesn't mean we're sitting back with our feet up. We continue to study markets for raw materials and technologies, pay attention to trends, and pursue vast research. We're especially committed to sustainable development. Our scientists and experts actively participate in international research projects on new chemicals technologies and initiatives in the field of climate change mitigation and sustainable construction. And although our floors already boast lower life cycle costs, that doesn't stop us from continuing to evaluate and extend the life cycle of each system. Because as we all know, even the best can get better.





# IT'S ABOUT HAVING THE RIGHT CHEMISTRY

As a global market leader in construction chemicals, when it came to creating functional, beautiful flooring, it was like a match made in heaven. Although like any great relationship, we're constantly working at it. Across the globe, our research and development specialists dig in day and night, experimenting, testing and trying things that have never been done before.

## **...AND NOT BEING AFRAID TO GET YOUR FEET WET.**

Having the right chemistry is important but innovation also takes courage. Courage to question the past, to re-examine established practices and to crawl out on a limb with no one below to catch you. Over 800 employees work in product development, and last year alone, Sika filed seventy new patent applications and launched a significant number of new products to satisfy our customers' needs and desires.



# WE'RE ALL EARS

There are people who listen to reply and those who listen to learn. At Sika, we're learners. Every day, our employees engage with customers in different cities sprinkled across the globe. And every day, we listen to what they have to say. It's those voices – their concerns, needs and accolades – that inspire us to work harder, think more creatively and exceed expectations.

"Customer First" is our mantra from corporate to R&D to the technicians out in the field. Our flooring specialists are located in every region of the world to provide assistance before, during and after each floor installation ensuring that the entire process goes flawlessly.





# TAKE YOUR PICK

YOU CAN RUN, DRIVE, SPLASH, CRASH AND WALK ALL OVER US.

WE THRIVE IN DEMANDING ENVIRONMENTS. FROM THOUSAND-POUND STEEL LIFTS TO RAZOR-SHARP OPERATING CHISELS, WE CAN TAKE ON THE HARSHTEST ELEMENTS AND STILL LOOK BEAUTIFUL WHILE DOING IT. AFTER ALL, HIGH PERFORMANCE FLOORING IS OUR SPECIALTY, AND THEY DON'T CALL US THE EXPERTS IN POLYURETHANE AND EPOXY CHEMISTRY FOR NOTHING.

With a full range of floor and wall solutions, we're confident that we can find a system that's right for you. Our flooring systems have been developed for a wide range of markets including transportation, manufacturing, healthcare, education, retail, commercial and administrative uses. And of course, each of these markets has specific requirements in terms of traffic, chemical resistance, temperature, waterproofing, and more. It sounds complicated but don't worry, we know this stuff inside and out.

With dozens of systems in countless styles, textures and colors, if you can dream it, chances are we can create it. Just tell us what you're looking for and together, we'll find the perfect, high performance flooring system for your unique needs.

DECORATIVE  
FLOOR SYSTEM



INDUSTRIAL  
FLOOR SYSTEM







# NOT ALL MASTER-PIECES HANG ON THE WALL

There's an artist in all of us, and with Sika's Decorative Systems, the floor is your canvas. You can play with color, texture and shape or integrate your corporate identity onto the floor's surface to design your own unique flooring. With colored chips, aggregates and other fillers in a wide range of hues, your palette is rich with opportunity.

Sika's flooring professionals work with you to design a unique flooring system that matches your expectations for aesthetics, durability and worry-free maintenance. Our decorative systems promise superior mechanical and chemical resistance, low maintenance, low VOC and odor, and a cleaner, safer, more comfortable work environment. And because we're the masters of high performance flooring, you can rely on your floor to turn heads for years to come.



# DECORATIVE FLOOR SYSTEMS



## DECORATIVE FLOOR SYSTEMS

# Sika ComfortFloor®

The Sika ComfortFloor® system family is the perfect balance between comfort and durability. This resilient flooring is tough enough to stand up to high levels of pedestrian traffic, chair castors and wheeled loads yet its softer resin and added flexibility provide a more pleasant footfall and increase comfort when walking or standing even for long periods of time. The special surface also reduces the sound of footsteps and horizontal noise transmission for a quieter environment. With a host of solid and decorative flake blends, this soft yet tough combination is a beautiful solution.

### PRODUCT HIGHLIGHTS

#### **BREATH OF FRESH AIR**

Exceeds highest global standards for Indoor Air Quality

#### **OUTSTANDING PERFORMANCE**

Highly durable; excellent color stability; good scratch, wear and impact resistance

#### **PEACE AND QUIET**

Superior comfort and noise absorption

### RECOMMENDED ENVIRONMENTS:

- Institutional buildings such as schools, museums, libraries and hospitals
- Commercial buildings such as shopping malls, hotels, office buildings and restaurants
- Residential buildings with high-end modern design





# Sika ComfortFloor®

Design Freedom





# Sika ComfortFloor®

2Tone FX







# Sika ComfortFloor®

Unicolor





## DECORATIVE FLOOR SYSTEMS

# Sikafloor® DecoDur Granite

When you want to make a statement, Sikafloor® DecoDur Granite gives you a variety of ways to do it. This highly decorative floor system offers almost unlimited functional and aesthetic design options so you can create rooms as unique and distinctive as the people working in them. These attractive floors have good chemical resistance, low VOC and an epoxy surface virtually unmatched in performance.

### PRODUCT HIGHLIGHTS

#### REMARKABLE FINISH

Multiple textures, smooth and non-slip applications, natural look

#### IMPRESSIVE RESISTANCE

Good chemical, scratch, wear and impact resistance

#### ENDLESS CHOICES

Highly decorative and customizable

### RECOMMENDED ENVIRONMENTS:

- Life science facilities
- Laboratories
- High-pedestrian traffic zones in commercial and institutional buildings
- Food courts
- Sanitary facilities





# Sikafloor® DecoDur

Granite





LT006

LT007

## DECORATIVE FLOOR SYSTEMS

# Sikafloor® DecoDur Quartz

Style and performance go hand in hand with our Sikafloor® DecoDur Quartz flooring. These systems blend ceramic-coated quartz aggregate with a clear polymer matrix to create a wide range of appealing finishes and textures. Boasting superior mechanical resistance and long-term performance, they are ideally suited for commercial, institutional and industrial uses. And with an endless variety of decorative quartz color combinations and slip-resistant textures, the systems can be tailored to fit your unique conditions and tastes.

### PRODUCT HIGHLIGHTS

#### LOW MAINTENANCE

Lower maintenance and life cycle cost vs. tile, sheet goods and carpet

#### SUPERIOR RESISTANCE

Superior mechanical resistance, chemical and stain resistance

#### SMOOTH SURFACE

Easy-to-maintain, seamless, hygienic surface

### RECOMMENDED ENVIRONMENTS:

- Life science facilities
- Laboratories
- High-pedestrian traffic zones in commercial and institutional buildings
- Food courts
- Sanitary facilities







Sikafloor® DecoDur

Quartz

A large, stylized logo for 'FLOOR' is centered on the page. The word 'FLOOR' is written in a bold, yellow, sans-serif font with a blue outline and a slight 3D effect. The letters are set against a dark blue, banner-like background that has a white outline and a slight shadow. The logo is positioned over a yellow background with a fine, pebbled texture. In the background, there is a circular emblem with a red, serrated edge. The emblem contains the word 'HAMBL' in white, block letters on a blue background, and the word 'Gee' in a yellow, cursive font on a black background. The top of the emblem shows the letters 'WOR' in white on a blue background.

FLOOR

HAMBL

Gee



## DECORATIVE FLOOR SYSTEMS

# Sikafloor® DecoDur Flake

Durable flooring has never had such panache. Our Sikafloor® DecoDur Flake systems provide long-term performance in an attractive, colorful-flake design. This easy-to-maintain, seamless surface consists of clear epoxy binder with multi-colored vinyl chips in a variety of eye-catching patterns. With a wide range of visual textures and finish coat options and an extensive color palette, this aesthetic system is highly customizable.

### PRODUCT HIGHLIGHTS

#### HIGH QUALITY

Factory blended, high quality flakes

#### LONG-LASTING DURABILITY

Excellent durability, color stability and chemical resistance

#### LOW MAINTENANCE

Easy to maintain and clean

### RECOMMENDED ENVIRONMENTS:

- Life science facilities
- Laboratories
- High-pedestrian traffic zones in commercial and institutional buildings
- Food courts
- Sanitary facilities



# Sikafloor® DecoDur

Flake





## DECORATIVE FLOOR SYSTEMS

# Sikafloor® DecoDur Compact

You want that tough and resistant industrial floor, that just doesn't look like a typical industrial floor... With Sikafloor® DecoDur Compact we offer the look and feel of our Sikafloor® DecoDur Quartz in a high density design. These power floated floors offer unparalleled mechanical resistance and long-term performance in the world of seamless decorative flooring. They are ideally suited for demanding commercial, institutional and industrial uses. And with an endless variety of decorative quartz color combinations and slip-resistant textures, the systems can be tailored to fit your unique conditions and tastes.

### PRODUCT HIGHLIGHTS

#### **TOUGH, TOUGHER, TOUGHEST**

Excellent abrasion, chemical and impact resistance. Suited for industrial traffic and use.

#### **LOW MAINTENANCE**

Seamless and easy to clean

#### **ENDLESS CHOICES**

Highly customizable for wide range of applications, unique combination of heavy duty performance and pleasing aesthetics

### RECOMMENDED ENVIRONMENTS:

- Industrial grade facilities
- Laboratories
- Heavy traffic zones in commercial and institutional buildings
- Commercial areas with rolling loads
- Storage facilities







F  
FAGERBERG

1105 2450 025  
1105 2060 020

F  
FAGERBERG

F  
FAGERBERG

1105 2450 025  
1105 2060 020

F  
FAGERBERG

1105 2450 025  
1105 2060 020

F  
FAGERBERG

1105 2450 025  
1105 2060 020

F  
FAGERBERG

1105 2060 020

F  
FAGERBERG

1105 2450 025  
1105 2060 020

F  
FAGERBERG

1105 2450 025  
1105 2060 020

F  
FAGERBERG

1105 2060 020

1105 2450 025  
1105 2060 020

F  
FAGERBERG

1105 2060 020

# Sikafloor® DecoDur

Compact





## DECORATIVE FLOOR SYSTEMS

# Sikafloor® DecoDur Metallic FX

SikaFloor® DecoDur Metallic FX brings real glamor to the flooring industry. Its self-smoothing, pearlescent surface reflects light to create dramatic colors and shine. These stylish, customizable designs come in a wide range of multi-dimensional colors. But don't let the dazzling surfaces fool you – DecoDur Metallic FX is durable, impermeable and seamless with increased chemical resistance. And its low VOC and low odor also help prove that its beauty goes well beyond the surface.

### PRODUCT HIGHLIGHTS

#### **EASY TO MAINTAIN**

Fast turnaround and easy maintenance

#### **STRIKING FINISH**

Smooth, matte and glossy pearlescent surfaces available, good color stability

#### **OUTRIGHT IMPERVIOUS**

Impermeable, highly resistant to abrasion and chemicals

### RECOMMENDED ENVIRONMENTS:

- Shopping malls
- Commercial areas, show-rooms
- High-pedestrian traffic zones in commercial and institutional buildings
- Food courts, restaurants
- Residential areas





# Sikafloor® DecoDur

Metallic FX





# SHOWING GRACE UNDER PRESSURE

Let's face it, an industrial floor has the toughest job in the building. It has to withstand constant traffic and mechanical wear along with abuse from things like corrosive liquids, high temperatures and impacts to name a few. If the floor can't handle the stress, everything else is in jeopardy. That's why so many people rely on Sika. Because the beauty of our industrial flooring isn't just on the outside, it goes all the way down to the core.

Our floors stand the test of time. Each one is designed and installed to suit the specific conditions of that area in that particular industry. There are myriad variables, and we take every one of them to heart. We figure the more time we spend perfecting our floors, the longer our floors will spend with you.

Many people are indoors more than 80% of the day, and Sika is dedicated to improving indoor air quality. Our flooring systems meet or exceed low VOC requirements and contribute to multiple points in the green building certification. As with everything that comes out of Sika, our floors and walls have 'sustainability' written all over them.





# INDUSTRIAL FLOOR SYSTEMS



## INDUSTRIAL FLOOR SYSTEMS

# Sikafloor® MultiDur

For high-demand commercial and industrial settings, Sikafloor® MultiDur is the optimum choice. This system is custom designed for your conditions whether that means heavy traffic, large equipment, abrasion or harsh chemicals. Whatever you throw at it, MultiDur handles with style. The seamless, easy-to-clean surface comes in a variety of colors, surface textures and gloss levels, and does wonders with light reflectance and facility aesthetics. Also available as heavy-duty mortar flooring systems with compressive strength two to three times greater than concrete. These mortars boasts excellent chemical, abrasion and impact resistance along with offering a slip-resistant texture for reduced injury risk on wet surfaces.

### PRODUCT HIGHLIGHTS

#### OUR TOUGHEST YET

Excellent abrasion, chemical and impact resistance. Suited for heavy traffic and aggressive use.

#### LOW MAINTENANCE

Seamless and easy to clean

#### ENDLESS CHOICES

Highly customizable for wide range of applications

### RECOMMENDED ENVIRONMENTS:

- Storage, logistics and sales areas
- Production, processing and cleanroom areas (dry and wet)
- Ground-bearing decks, car parks
- Commercial, public and residential areas

Note: This photo shows a typical Sikafloor® MultiDur with a smooth finish applied in an automotive industry environment.





86

# Sikafloor® MultiDur

Broadcast





# Sikafloor® MultiDur

Textured





ALLE ARBEITEN WAREN VERFASST

Ausfahrt ↑

Entfahrt

Entfahrt

# Sikafloor® MultiDur

Mortar



**HERC-U-LIFT**  
1800-478-2001, Toll Free 800-800-8000

4812 N. 20th Avenue MOORE FALLS, SD 57104 Tel. 605-322-4760 Toll Free 800-800-8000	1800 47th Street GRAND RAPIDS, MI 49508 Tel. 216-225-0100 Toll Free 800-800-8000
780 21st Avenue N.E. ST. CLOUD, MN 56304 Tel. 320-321-8001 Toll Free 877-251-8001	700 E. Highway WILLMAR, MN 56201 Tel. 320-222-0100 Toll Free 800-800-8000
4230 12th Avenue NW FARGO, ND 58102 Tel. 701-218-2011 Toll Free 800-362-2000	1670 N.E. 22nd St DES MOINES, IA 50319 Tel. 515-266-8000 Toll Free 800-800-8000

**HAIS EQUIPMENT**  
4819 B Broadway  
MINOT, ND 58701  
Tel. 701-826-5800

14 1/2" Scissor  
WILLINGTON, NC  
Tel. 701-878-8000  
Service 701-878-8000  
Toll Free 800-800-8000

[www.herc-u-lift.com](http://www.herc-u-lift.com)

**SALES SERVICE REPAIR**







## INDUSTRIAL FLOOR SYSTEMS

# Sikafloor® ESD DIF and ECF

In industries where electronic components or volatile chemicals are involved, static electricity can result in significant damage, injury and financial loss. That's why Sika created its unique Sikafloor® ESD (Electro Static Discharge), DIF (Dissipative Flooring) and ECF (Electrically Conductive Flooring ) systems. They not only protect your work environment against electrostatic discharge but they also deliver proper grounding of the human body and footwear. This diverse line of coatings allows you to customize your system to your own tastes. Safety never looked so stylish.

### PRODUCT HIGHLIGHTS

#### **ULTIMATE PROTECTION**

Protects against electrostatic discharge, no conditioning of electrical properties required

#### **BREATH OF FRESH AIR**

Low odor and low VOC

#### **LOW MAINTENANCE**

Easy to repair and maintain

### RECOMMENDED ENVIRONMENTS:

- Electronic manufacturing
- Pharmaceutical production
- Cleanroom areas (dry and wet)
- Rooms with static-sensitive devices





# Sikafloor® ESD





## INDUSTRIAL FLOOR SYSTEMS

# Sikafloor® MultiFlex

If you're looking for flexible, waterproof flooring, look no further. Sikafloor® Multiflex combines the crack-bridging and waterproofing benefits of a flexible membrane with the seamless, wear protection of an epoxy or a chemical resistant urethane top coat. The monolithic, waterproof surface provides superior durability, which in turn provides welcome peace of mind.

### PRODUCT HIGHLIGHTS

#### **LOW MAINTENANCE**

Seamless, easy to maintain

#### **WATERPROOF**

Flexible, waterproof surface

#### **NOTEWORTHY FINISH**

Chemical resistant and slip resistant finishes available

### RECOMMENDED ENVIRONMENTS:

- Storage, logistic and sales areas (raised floors)
- Car parks, intermediate and top decks
- Production, processing and cleanroom areas (dry and wet)





Sikafloor® MultiFlex®







## INDUSTRIAL FLOOR SYSTEMS

# Sikafloor® OneShot

In parking garages or on bridge decks where the floors need to be applied on a tight schedule, Sikafloor® OneShot is the perfect solution which has short downtime with innovative spray applied injection technology combining polyurea and aggregates. The time needed for this system from substrate priming to ready-to-use flooring is one day.

### PRODUCT HIGHLIGHTS

#### **TIME SAVING APPLICATION**

Short downtime, lower staff assignment

#### **MATERIAL SAVING**

Low material consumption thanks to the new application method

#### **HIGH PERFORMANCE**

High durability, high flexible system, everlasting water and weather resistant, slip resistant

### RECOMMENDED ENVIRONMENTS:

- Car parks, park garages
- Bridge decks





## INDUSTRIAL FLOOR SYSTEMS

# Sikafloor® PurCem®

This system family is a top performer. The Sikafloor® PurCem® polyurethane concrete systems combine the most demanding performance characteristics including resistance to impact, abrasion, aggressive chemicals and thermal shock. They are easy to maintain and completely reliable, making PurCem® the perfect choice for areas where both cleanliness and durability are crucial. Available in different slip resistant textures, both in a matte or glossy finish.

### PRODUCT HIGHLIGHTS

#### TOP PERFORMANCE

Excellent abrasion, chemical and impact resistance, high temperature variations and thermal shock resistance

#### SUSTAINABLE SOLUTION

Extremely low VOC. Water based. Odorless, fulfil all norms for indoor quality. Superior life cycle cost advantages due to its durability, low maintenance and easy renewal with resurfacing options

#### HYGIENIC FLOORS

Fulfil hygienic and cleaning requirements for food processing areas

### RECOMMENDED ENVIRONMENTS:

- Food and beverage processing facilities
- Professional and commercial kitchens
- Cool storage areas
- Heavy-duty processing areas, especially wet processing



Sikafloor® PurCem®

Matte





# Sikafloor® PurCem®

Glossy







## INDUSTRIAL FLOOR SYSTEMS

# Sikafloor® Pronto

Sikafloor® Pronto speeds up installation time to the maximum. It is also known for its high resistance to a wide variety of uses. The super-fast curing time of these synthetics allows for super quick refurbishments.

### PRODUCT HIGHLIGHTS

#### **BIG ADVANTAGE IN APPLICATION**

Fast curing, can be applied at low temperature

#### **HIGH PERFORMANCE**

High flexibility at low temperature, static and dynamic bridging capacity, good impact and wear resistance, good chemical resistance, suitable for dry and wet conditions, impermeability to liquids

#### **SAFE FOR FOOD INDUSTRY**

Food compliance, with ISEGA certificate

### RECOMMENDED ENVIRONMENTS:

- Commercial kitchens
- Processing areas
- Pedestrian walkways, such as balconies and staircases
- Animal facilities
- Multi-story and underground car parks and parking garages





Welkom

in het

TOPSPORT

RESTAU

RAI

# Sikafloor® Pronto





## INDUSTRIAL FLOOR SYSTEMS

# Sikafloor® MonoFlex

Sikafloor® MonoFlex flooring systems have earned their excellent reputation based mainly on their performance as a waterproof finish for balconies, walkways and staircases with pedestrian traffic. Moisture-triggered systems are available and they are true innovations in terms of sustainability and ease of application. The floor surface finish can be designed by adding flakes or light to medium anti-slip surface texture.

### PRODUCT HIGHLIGHTS

#### **EXCELLENT OUTDOOR PERFORMANCE**

Slip resistant, wear resistant, extremely high color and UV-stability.

#### **WATERPROOFING**

Crack bridging elasticity for long term waterproofing functionality.

#### **EASY APPLICATION**

Fast and easy to apply, the single component moisture-triggered systems are less weather sensitive and cure in a wide range of climatic conditions.

### RECOMMENDED ENVIRONMENTS:

- Balconies
- Pedestrian walkways and staircases





## INDUSTRIAL FLOOR SYSTEMS

# Sikafloor® HardTop

Cementitious Industrial Floor Systems

Sikafloor® HardTop is our range of heavy duty cementitious floors. It consists of concrete surface hardening, curing and sealing as well as heavy duty industrial screeds. Our dry shake Sikafloor® powders are broadcasted directly onto the fresh concrete – before the power float finish is applied – to create an extremely hard-wearing, monolithic concrete floor. Additional performance can be achieved through various liquid-applied surface hardeners, curing compounds and surface sealers. Our HardTop screeds provide fast curing extremely tough cementitious screeds for substrate use or direct traffic.

### PRODUCT HIGHLIGHTS

#### **LOW COST**

Economic floor solution

#### **GOOD PERFORMANCE**

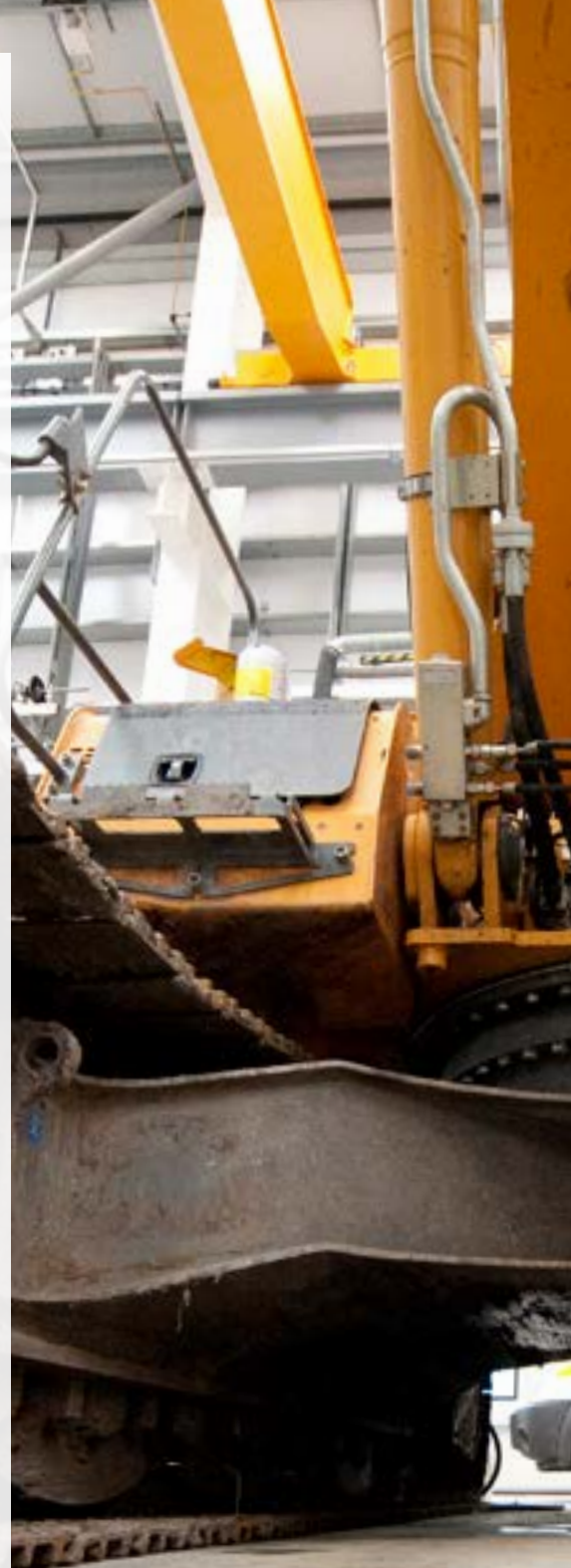
Durable and tough, system options with good to excellent abrasion and impact resistance, smooth surface options to prevent dusting, heavy duty monolithic finish for concrete floors fulfilling ESD requirement is also available.

#### **SAFE AND SUSTAINABLE**

Odorless and good Life-Cycle-Assessment performance

### RECOMMENDED ENVIRONMENTS:

- Storage, logistics and sales areas
- Car parks, parking garages
- Non-critical, heavy-duty industrial areas such as dry processing facilities







## INDUSTRIAL FLOOR SYSTEMS

# Sikafloor® Level

Cementitious Sikafloor® Systems

A perfectly even and smooth floor substrate surface plays an important role in the final result and life span of the floor, no matter what kind of floor covering will be installed over it. Sika supplies Sikafloor® Level self-leveling compounds whose outstanding performance has been proven in construction projects with high requirements, ranging from house use to fork lift truck loads in industry.

### PRODUCT HIGHLIGHTS

#### **EASY APPLICATION**

Very easy and fast to mix and apply, outstanding flow properties

#### **GUARANTEED SURFACE QUALITY**

High surface coverage to level and fill in all uneven places even in thin layers

#### **WIDE APPLICATION**

Suitable for multi-purpose applications. Optimized shrinkage

### RECOMMENDED ENVIRONMENTS:

Sikafloor® Level systems can be used in combination with other Sika flooring solutions and with a wide variety of common commercial floors.





## INDUSTRIAL FLOOR SYSTEMS

# Sika® FloorJoint

The sound and feeling of rumbling over floor joints is familiar to most of us. Not only is it uncomfortable but it can also cause damage to forklifts and other transport equipment. Sika has the perfect solution to this problem with its ultra-thin and almost invisible FloorJoint profiles. The profiles are made of carbon fiber reinforced concrete and are installed flush with the surface level of the floor. So you can say goodbye to thresholds, bone-jarring jolts and expensive damage to vehicles and say hello to a vibration-free, noiseless ride. Also available in a design with additional waterproofing.

### PRODUCT HIGHLIGHTS

#### **NO NOISE AND VIBRATION**

Absolutely silent when trafficked, ultra thin and almost invisible joint profiles

#### **HIGH PERFORMANCE**

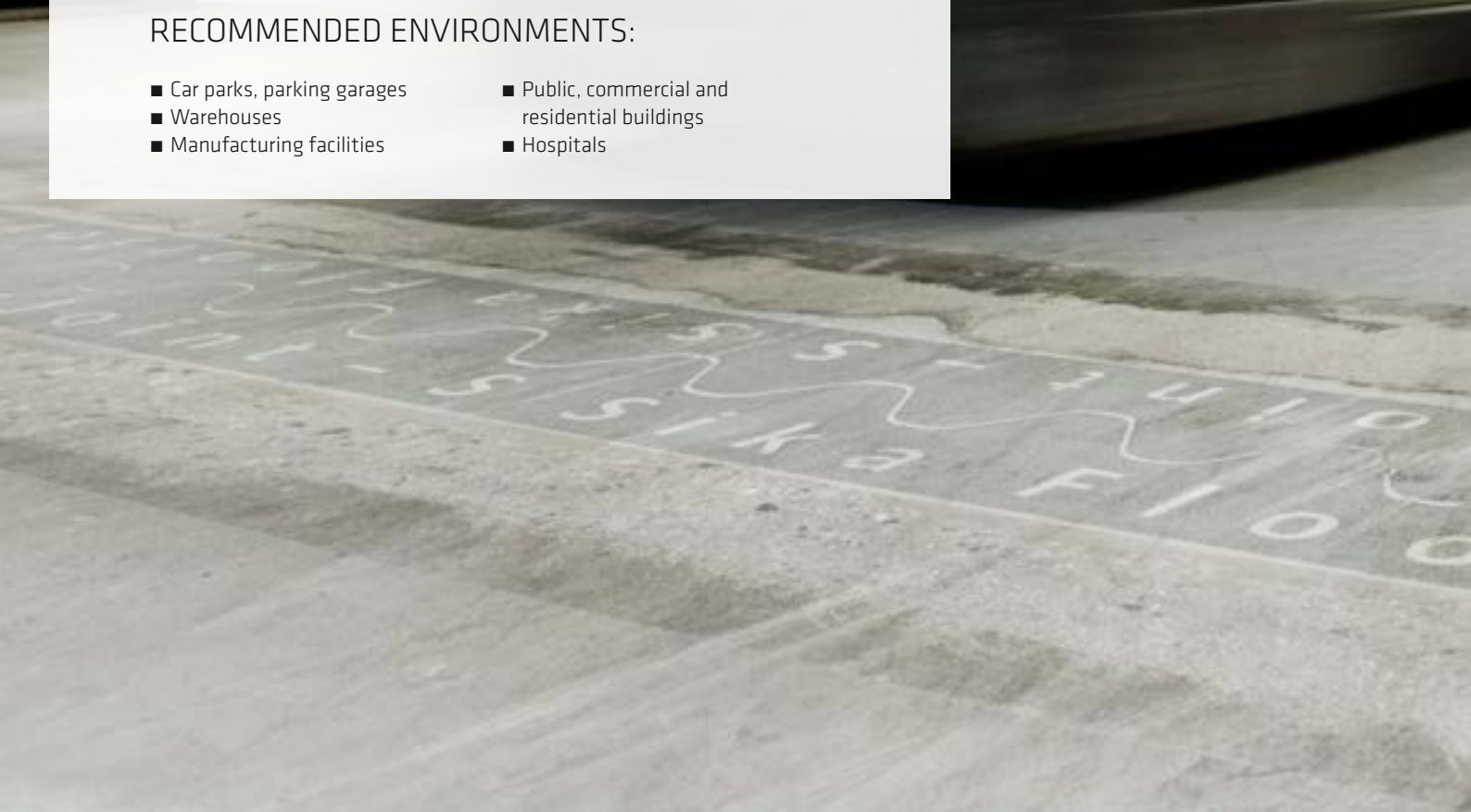
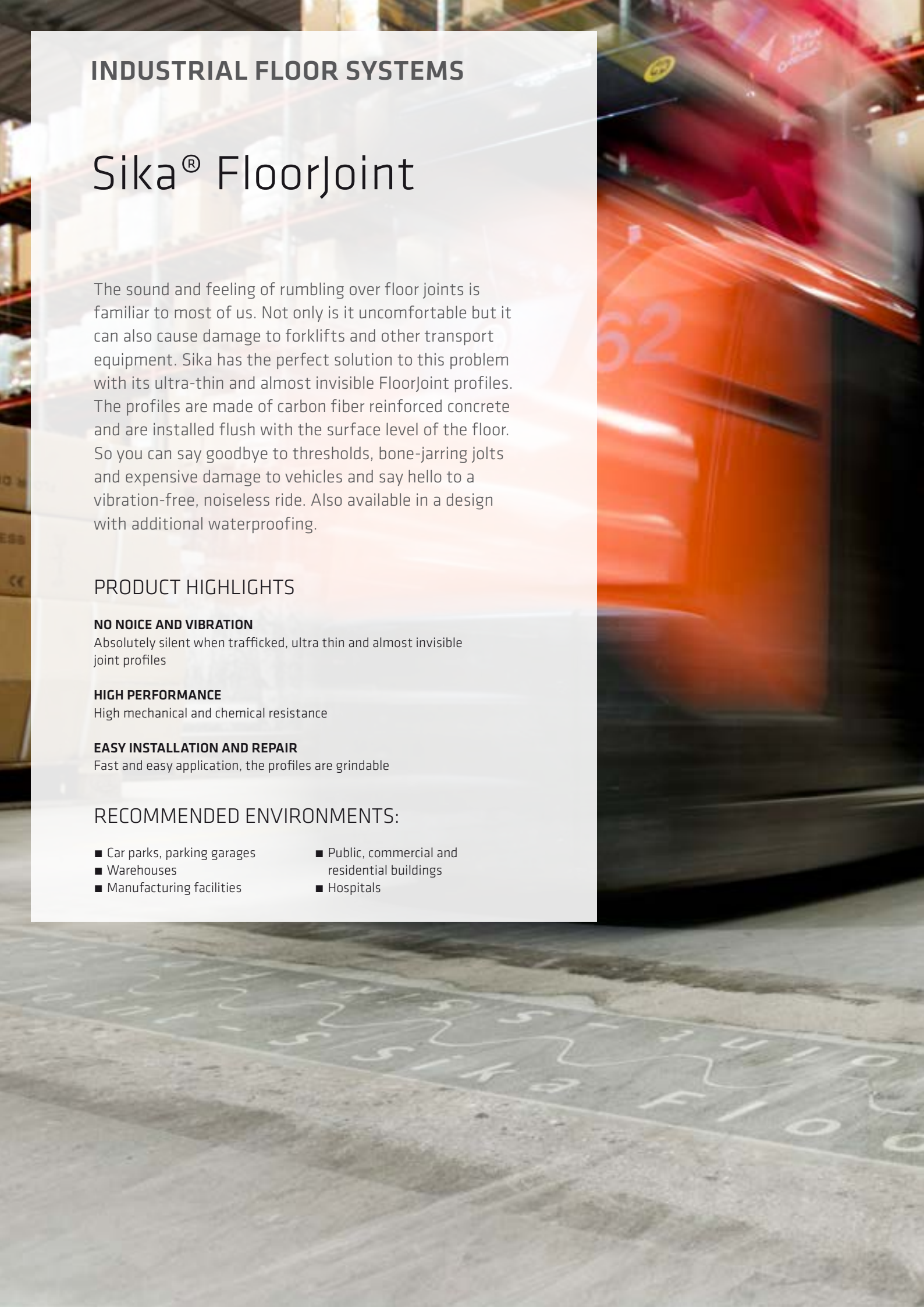
High mechanical and chemical resistance

#### **EASY INSTALLATION AND REPAIR**

Fast and easy application, the profiles are grindable

### RECOMMENDED ENVIRONMENTS:

- Car parks, parking garages
- Warehouses
- Manufacturing facilities
- Public, commercial and residential buildings
- Hospitals





04

05

05

06

06

07

07

08

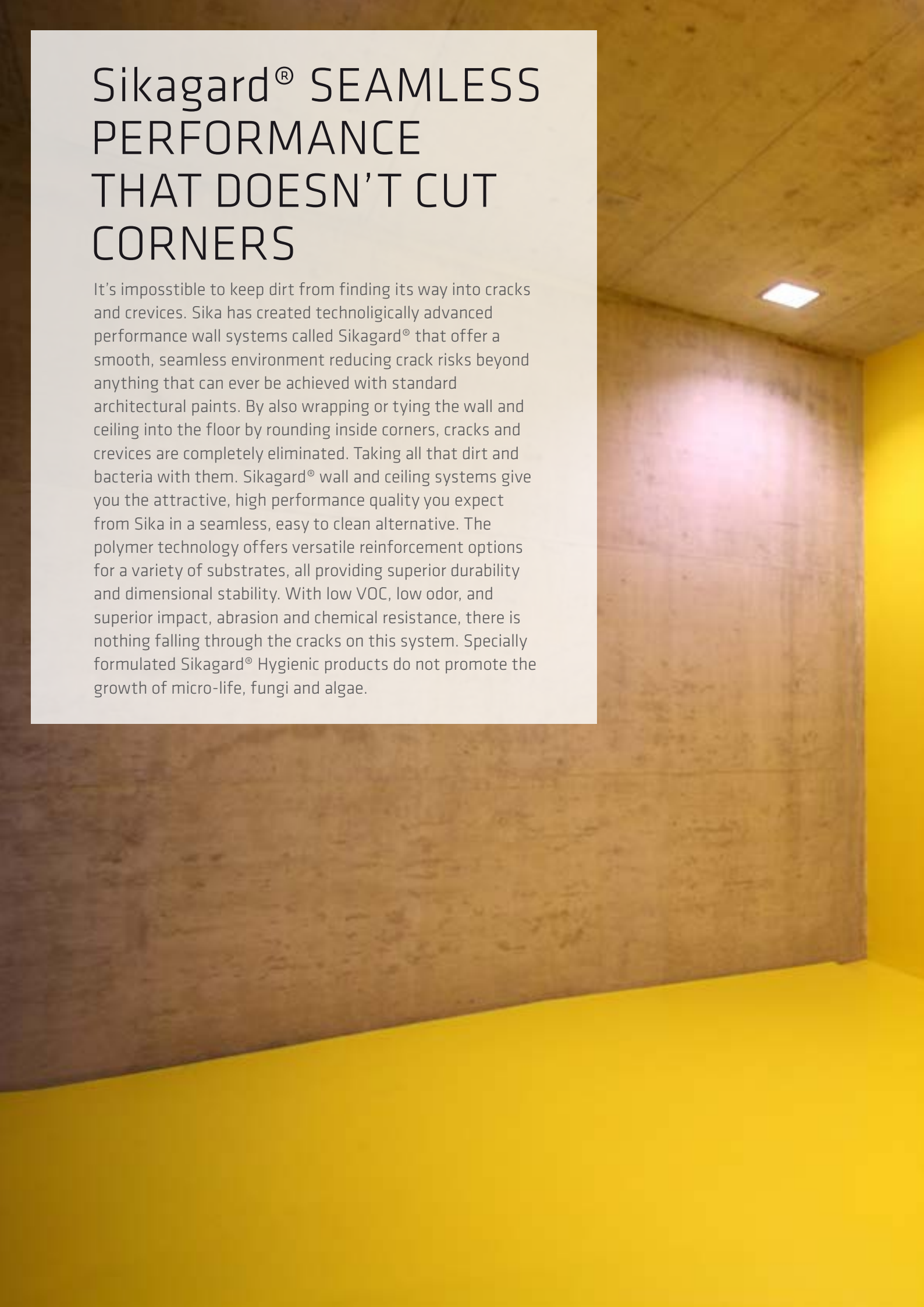
08

84

Joint Forklift

# Sikagard® SEAMLESS PERFORMANCE THAT DOESN'T CUT CORNERS

It's impossible to keep dirt from finding its way into cracks and crevices. Sika has created technologically advanced performance wall systems called Sikagard® that offer a smooth, seamless environment reducing crack risks beyond anything that can ever be achieved with standard architectural paints. By also wrapping or tying the wall and ceiling into the floor by rounding inside corners, cracks and crevices are completely eliminated. Taking all that dirt and bacteria with them. Sikagard® wall and ceiling systems give you the attractive, high performance quality you expect from Sika in a seamless, easy to clean alternative. The polymer technology offers versatile reinforcement options for a variety of substrates, all providing superior durability and dimensional stability. With low VOC, low odor, and superior impact, abrasion and chemical resistance, there is nothing falling through the cracks on this system. Specially formulated Sikagard® Hygienic products do not promote the growth of micro-life, fungi and algae.





# Sikagard®

## WallCoat







Sikagard®

Hygienic





# COLOR YOUR WORLD WITH SIKA

At Sika, we don't see things in black and white. We like to think in rainbows. Where endless colors and even textures, shines and sparkles are all possibilities. When you create a Sika floor, you can choose from an extensive selection of standard colors but it doesn't stop there. If you don't find exactly what you want, we can customize the floor to meet your individual needs and styles. Cool colors, warm hues, corporate logos, you name it and we'll help you design it. At the end of our rainbow of choices, you'll always find a beautiful floor.





# A SELECTION OF CLIENTS WE'VE ALREADY FLOORED

## MANUFACTURING

### TRANSPORTATION

Airbus  
Boeing

Audi  
BMW  
Caterpillar  
Daewoo  
Fiat  
General Motors  
Honda  
Jaguar  
Land Rover  
Mercedes Benz  
Mitsubishi  
Nissan  
Porsche  
Rolls Royce  
Skoda  
Suzuki  
Toyota  
Volkswagen  
Volvo

### ELECTRONICS & IT

Bosch  
Garmin  
General Electric  
Hilti  
Huawei  
Kärcher  
Leica Cameras  
Logitech  
Magneti Marelli  
Metabo  
Motorola  
Nokia  
Phillips  
Samsung  
Seiko  
Siemens  
Texas Instruments  
China Mobile  
Compass Data Centers  
Facebook  
Google  
Microsoft

### OTHER

ProLogis

Bridgestone  
Continental  
Michelin  
Pirelli

3M  
Akzo Nobel  
Albany Safran  
Bayer  
Clariant Chemicals  
Dupont  
ICI  
Procter & Gamble  
Schindler Elevator  
Thyssen Krupp

Exxon  
Petronas  
Shell

### LIFE SCIENCE

Asahi  
Budweiser  
Carlsberg  
Coca Cola  
Danone  
Ferrero  
Heineken  
Heinz  
Jägermeister  
Kellogg's  
Lactalis  
Miller Coors  
Nestlé  
Pepsi Cola  
Perrier  
Schweppes  
Unilever  
Valio Dairy

American Tobacco  
Beijing Tobacco

Johnson & Johnson  
L'Oreal  
Merck Pharmaceutical  
Novartis  
Pfizer  
Roche

### HOTEL & CATERING

Hilton  
Kempinski  
Mariott  
Sofitel

Fuddruckers  
McDonalds

### RETAIL & DISTRIBUTION

ALDI  
Amazon  
Armani  
Carrefour  
DHL  
G-Star  
IKEA  
Levis  
Macy's  
Safilo  
Target  
Walmart  
Whole Foods

### STADIUMS / ARENAS

Allianz Arena Munich  
AT&T Stadium  
Football Stadium Macau  
Fuzhou Olympic Center  
Hong Kong Jockey Club  
Letzigrund Stadium  
Olympiastadion Berlin  
Phillips Arena  
Red Bull Arena  
Reynolds Stadium  
Wringley Field

## HEALTHCARE & EDUCATION

AZ Groeninghe  
Chicago Children's Memorial  
Hospital  
Denver Health Center  
Hacienda Surgical Ctr  
Hospital Sousa Martins  
Andersen Cancer Ctr  
Meander Hospital  
Poole Hospital  
San Francisco Hospital  
St. Constantin Hospital  
Queen Mary's Hospital  
York Hospital

Beijing Institute of  
Architecture  
Fraunhofer Institute  
Princeton University  
Robert-Koch Institute  
Stanford University  
Technical University Dresden  
University of Amsterdam  
University of Berlin  
University of Pennsylvania  
University of Wisconsin

# BUILDING TRUST SINCE 1910

SIKA PROVIDES WATERPROOFING SOLUTIONS FOR MORE THAN

**100 YEARS**

THE FIRST PRODUCT - SIKA®-1 - IS STILL ON THE MARKET

EVERY YEAR SIKA SUPPLIES ENOUGH ROOF MEMBRANES TO COVER THE

**WHOLE OF  
MANHATTAN**

MORE THAN

**30%**

INTERIOR NOISE REDUCTION IN VEHICLES THANKS TO SIKA'S ACOUSTIC SOLUTIONS

USING SIKA'S LONG-LASTING WINDOW INSTALLATION SEALANTS, MORE THAN

**1 MILLION**

WINDOW FRAMES ARE SEALED EACH YEAR HELPING TO SAVE MORE THAN

**10,000**

TANKER LOADS OF HEATING OIL OVER THEIR COMPLETE LIFETIME

SIKA'S CLEANROOM FLOORING SYSTEMS RELEASE

**1,000 TIMES  
LESS EMISSIONS**

THAN STANDARD LOW VOC SYSTEMS

WITH

**84 AWARDS**

IN 16 YEARS, SIKA IS THE COMPANY WITH THE MOST CONCRETE REPAIR PROJECTS AWARDED WORLDWIDE

THANKS TO SIKA'S RANGE OF WATER REDUCERS OVER

**25,000 MILLION  
LITERS OF WATER**

ARE SAVED ANNUALLY IN CONCRETE PRODUCTION

IN OVER 80 COUNTRIES, MORE THAN

**10,000  
ROOFING CONTRACTORS**

ARE TRAINED AND CERTIFIED BY SIKA

**50 %**

OF ALL CARS PRODUCED WORLDWIDE USE SIKA PRODUCTS

**BUILDING TRUST**



# ALSO AVAILABLE FROM SIKA



## FOR MORE SIKA FLOORING INFORMATION:



### WE ARE SIKA

Sika is a specialty chemicals company with a leading position in the development and production of systems and products for bonding, sealing, damping, reinforcing and protecting in the building sector and the motor vehicle industry. Sika's product lines feature concrete admixtures, mortars, sealants and adhesives, structural strengthening systems, flooring as well as roofing and waterproofing systems.

Our most current General Sales Conditions shall apply.  
Please consult the Data Sheet prior to any use and processing.

© SIKA HELLAS ABEE / FLOORING / FLOOR THE WORLD WITH SIKA / 05.2016 / HE#00194

### Sika Hellas ABEE

15 Protomagias str.  
GR 145 68, Kryoneri,  
Attica, Greece

### Contact

Tel. + 30 210 81 60 600  
Fax + 30 210 81 60 606  
Mail: sika@gr.sika.com

**BUILDING TRUST**

