

PRODUCT DATA SHEET

Sarnafil® T TuffLane 40 YB

WALKWAY / PROTECTION SHEET

DESCRIPTION

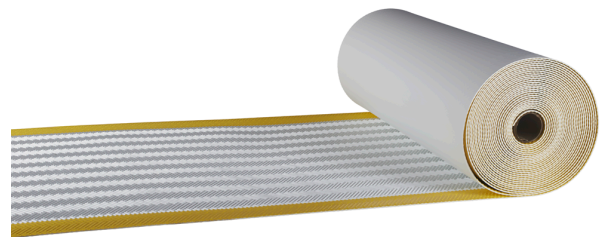
Sarnafil® T TuffLane 40 YB is a walkway / protection sheet based on flexible fibrous mixture of polyolefins (FPO) containing ultraviolet light stabilizers and flame retardant.

USES

Sarnafil® T TuffLane 40 YB is used as a protection layer on top of Sarnafil® T or Sikaplan® T roof waterproofing membrane without ballast as a frequent walkway for roof maintenance.

CHARACTERISTICS / ADVANTAGES

- Applicable for exposed roofing
- Good slip resistant surface due to embossed surface
- Innovative yellow safety border technology
- Easy and safe application
- Hot air welding without use of open flames
- Recyclable



APPROVALS / CERTIFICATES

- Reaction to fire according to EN 13501-1
- Slip resistance according to BS 7976-2, PTV \geq 40
- Slip resistance according to DIN 51130, R 10
- Slip resistance according to ASTM D 1894-01, COF \geq 0.80
- Quality management system EN ISO 9001/14001

PRODUCT INFORMATION

Chemical base	Flexible polyolefins (FPO) based on polypropylene (PP)	
Packaging	Packing unit: see price list	
	Roll length:	15.00 m
	Roll width:	0.76 m
	Roll weight:	32.00 kg

Appearance / Colour	Top surface:	herringbone embossed pattern
	Colours:	
	Top surface:	white (approximation to RAL 9010)
	Border:	approx. 50–60 mm yellow safety edge
	Bottom surface:	white

Shelf life	5 years from date of production and according to defined storage conditions in unopened, undamaged, original packaging.	
Storage conditions	Rolls must be stored between +5°C and +30°C, protected from direct sunlight, rain and snow. Do not stack pallets of rolls or any other material during transport or storage.	
Length	15.00 m (-0 % / +5 %)	EN 1848-2
Width	0.76 m (-0.5 % / +1 %)	EN 1848-2
Thickness	4.0 mm (-10 % / +10 %) (incl. embossing) 2.0 mm (-10% / + 10%) Depth of embossing	EN 1849-2
Mass per unit area	2.80 kg/m ² (-10 % / +10 %)	EN 1849-2

TECHNICAL INFORMATION

Tensile Strength	≥ 500 N/50 mm	EN 12311-2
Dimensional Stability	longitudinal (md) ¹⁾	≤ 0.3 % (EN 1107-2)
	transversal (cmd) ²⁾	≤ 0.3 %
	¹⁾ md = machine direction ²⁾ cmd = cross machine direction	
Reaction to Fire	Class E	EN 11925-2, classification to EN 13501-1
Water Vapour Transmission	μ 150 000	(EN 1931)

SYSTEMS

System Structure	Ancillary products: <ul style="list-style-type: none"> ▪ Sarnafil T Clean ▪ Sarnafil T Prep Compatible products: <ul style="list-style-type: none"> ▪ All types of Sarnafil® T and Sikaplan® T membranes based on PP
Compatibility	Not suitable as a primary waterproofing membrane.

APPLICATION INFORMATION

Ambient Air Temperature	At least + 5 °C
Substrate Temperature	At least + 5 °C

APPLICATION INSTRUCTIONS

APPLICATION

Installation works must be carried out only by Sika instructed contractors for roofing. Installation of some ancillary products, e.g. contact adhesives / cleaners is limited to temperatures above +5 °C. Please observe information contained in Product Data Sheets.

APPLICATION METHOD / TOOLS

Remove any loose debris and clean the FPO roof waterproofing membrane and allow to dry prior to application of the Sarnafil® T TuffLane 40 YB walkway. Roll out Sarnafil® T TuffLane 40 YB walkway / protection sheet and cut desired length up to 7.50 m and allow to relax while placing into the desired position. Leave a gap of approx. 2–3 cm between each section to allow for water drainage. The product is directly circular hot air welded onto Sarnafil® T or Sikaplan® T roof waterproofing membranes.

BASIS OF PRODUCT DATA

All technical data stated in this Product Data Sheet are based on laboratory tests. Actual measured data may vary due to circumstances beyond our control.

LOCAL RESTRICTIONS

Please note that as a result of specific local regulations the performance of this product may vary from country to country. Please consult the local Product Data Sheet for the exact description of the application fields.

ECOLOGY, HEALTH AND SAFETY

REGULATION (EC) NO 1907/2006 - REACH

This product is an article as defined in article 3 of regulation (EC) No 1907/2006 (REACH). It contains no substances which are intended to be released from the article under normal or reasonably foreseeable conditions of use. A safety data sheet following article 31 of the same regulation is not needed to bring the product to the market, to transport or to use it. For safe use follow the instructions given in this product data sheet. Based on our current knowledge, this product does not contain SVHC (substances of very high concern) as listed in Annex XIV of the REACH regulation or on the candidate list published by the European Chemicals Agency in concentrations above 0.1% (w/w).

LEGAL NOTES

The information, and, in particular, the recommendations relating to the application and end-use of Sika products, are given in good faith based on Sika's current knowledge and experience of the products when properly stored, handled and applied under normal conditions in accordance with Sika's recommendations. In practice, the differences in materials, substrates and actual site conditions are such that no warranty in respect of merchantability or of fitness for a particular purpose, nor any liability arising out of any legal relationship whatsoever, can be inferred either from this information, or from any written recommendations, or from any other advice offered. The user of the product must test the product's suitability for the intended application and purpose. Sika reserves the right to change the properties of its products. The proprietary rights of third parties must be observed. All orders are accepted subject to our current terms of sale and delivery. Users must always refer to the most recent issue of the local Product Data Sheet for the product concerned, copies of which will be supplied on request.

Sika Hellas ABEE

15 Protomagias Str.
14568 Kryoneri
Attica-Greece
Tel.: +30 210 8160 600
Fax: +30 210 8160 606
www.sika.gr | sika@gr.sika.com



Product Data Sheet
Sarnafil® T TuffLane 40 YB
February 2018, Version 01.01
020945032150002001

SarnafilITTuffLane40YB-en-GR-(02-2018)-1-1.pdf