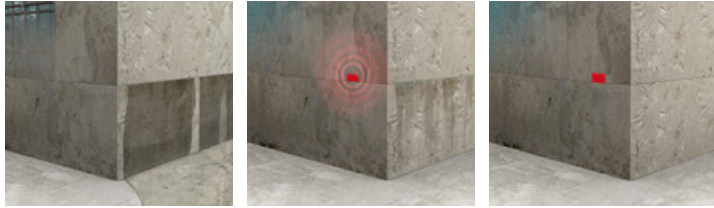


SikaSwell® RANGE

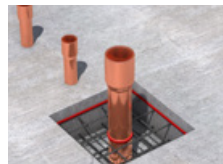
SWELLING PRESSURE SEALS THE JOINT AND IMPEDES THE CROSSING OF WATER.



Hydrophilic joint sealing systems like SikaSwell® profiles and sealants are waterstops which can swell and are used in watertight concrete structures for systematic sealing of construction joints. When in contact with water, the SikaSwell® waterstop builds up a swelling pressure inside of the construction. This swelling pressure seals the construction joint and impedes the crossing of water.



Construction Joints



Penetrations



Isolation Joints



Precast Concrete

KNOW-HOW FROM SITE TO SHELF



Your Local Sika Partner:

Our most current General Sales Conditions shall apply. Please consult the most current local Product Data Sheet prior to any use.

SIKA SERVICES AG

Waterproofing
 CH-8048 Zurich
 Switzerland
 Phone +41 58 436 40 40
 Fax +41 58 436 46 86
www.sika.com

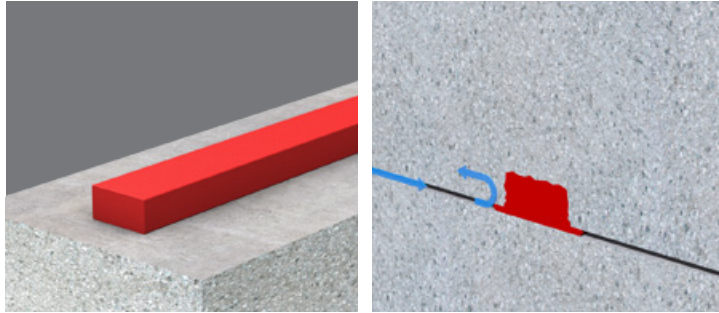
© Sika Services AG / Waterproofing / CNDL / SikaSwell® Range / 02.2014 / 753 / 1/D

SikaSwell® Range HIGHLY EFFECTIVE HYDROPHILIC JOINT SEALING SYSTEM



SikaSwell® A

ACRYLIC-BASED, SWELLABLE JOINT WATERPROOFING PROFILE



USES:

- For construction joints of in-situ concrete
- For penetrations of pipes and steel work
- Transitions between different construction materials

ADVANTAGES:

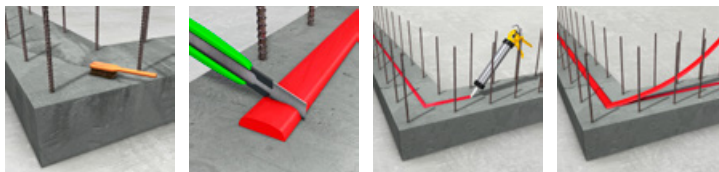
- Swells into smallest cracks and voids
- No loss of swelling capacity after several wet / dry-cycles
- Function and long-term stability tested and approved
- Acrylic-based

PACKAGING:

- 5 m, 7 m, 10 m and 20 m rolls in a box
- Rings and Plugs are available for sealing around all types of formwork spaces



APPLICATION:

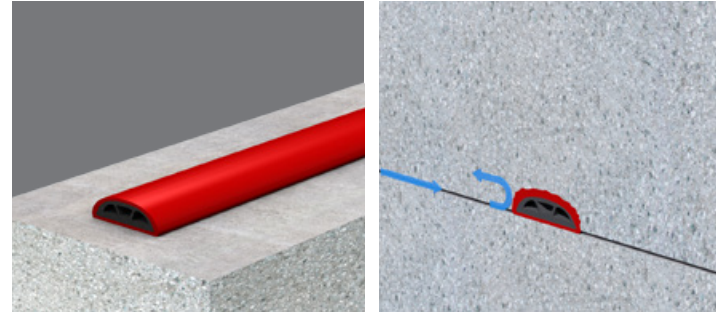


- Clean the substrate
- Cut the swelling profile to required length

- Apply the adhesive e.g. SikaSwell® S-2 in the center of the concrete section
- Press the swelling profile directly into the fresh adhesive

SikaSwell® P

POLYMER-BASED, SWELLABLE JOINT WATERPROOFING PROFILE



USES:

- Suitable for construction joints on precast elements
- For penetrations of pipes and steel work

ADVANTAGES:

- High mechanical stability
- Protective coating to withstand even heavy rain
- Various profile shapes available
- Performance tested and approved
- Polymer-based

PACKAGING:

- 10 m and 20 m rolls in a box



APPLICATION:



- Clean the substrate
- Cut the swelling profile to required length

- Apply the adhesive e.g. SikaSwell® S-2 in the center of the concrete section
- Press the swelling profile directly into the fresh adhesive

SikaSwell® S-2

POLYURETHANE-BASED, SWELLABLE JOINT WATERPROOFING SEALANT



USES:

- For construction joints of in-situ concrete
- Can be used as adhesive for SikaSwell® profiles

ADVANTAGES:

- Easy application by cartridge or unipack
- Perfect for small sealing details
- Application on rough surfaces
- Performance tested and approved
- Polyurethane-based

PACKAGING:

- 300 ml cartridge
- 600 ml unipack



APPLICATION:



- Clean the substrate
- Cut the nozzle in a triangle shape

- Install the cartridge in the caulking gun
- Apply the sealant in the center of the concrete section