



SIKA AT WORK

Industrial flooring of new coffee & chocolate processing & packaging unit
ARCHONTAKIS, Crete, Greece

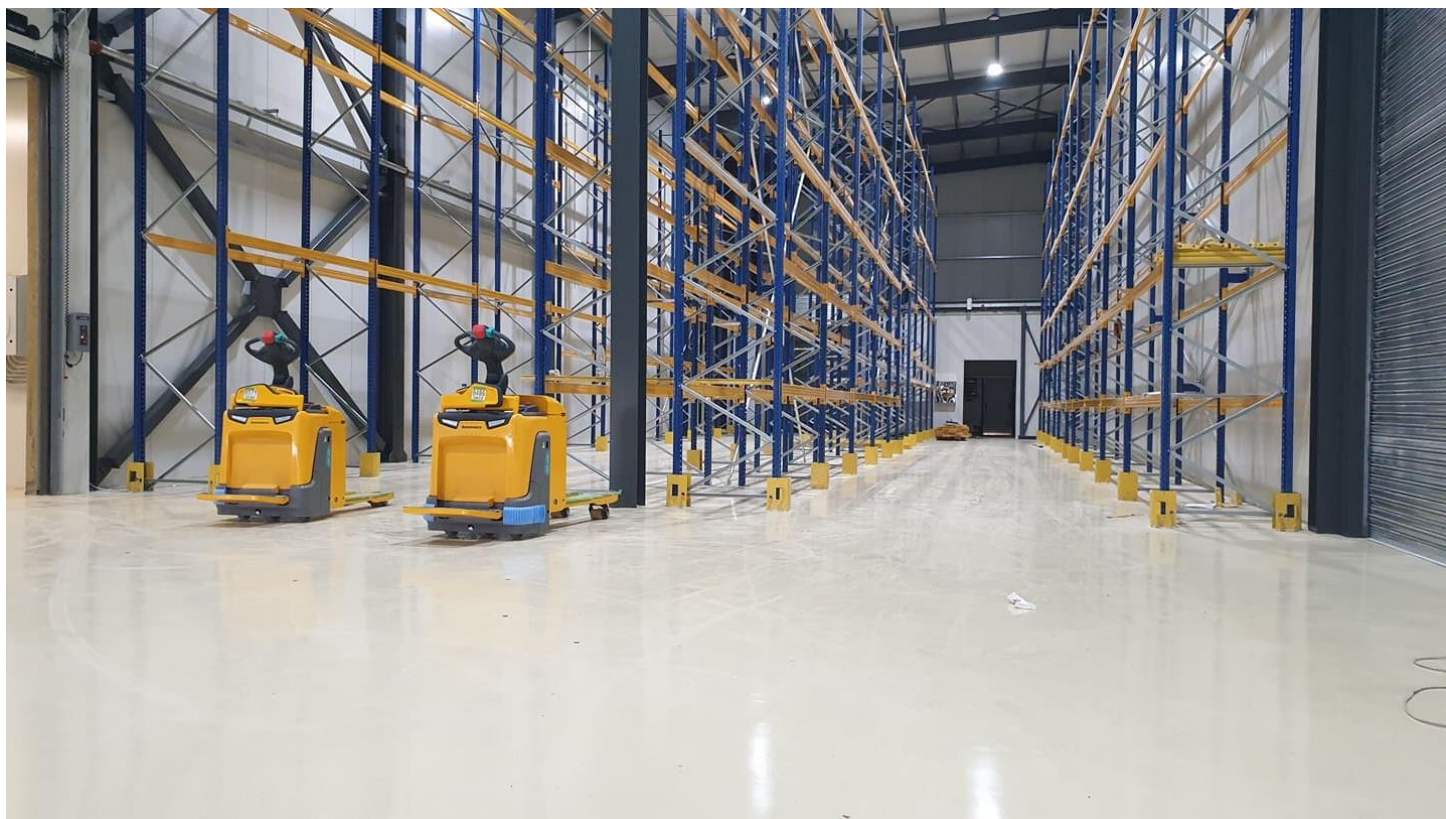
INDUSTRIAL FLOORING: Sikafloor® MultiDur ES-24 N, Sikafloor®-359 N



BUILDING TRUST



INDUSTRIAL FLOORING FOR COFFEE & CHOCOLATE PROCESSING & PACKAGING UNIT



PROJECT DESCRIPTION

"ARCHONTAKIS" enterprise has its roots in the coffee shop located at 45 Mousouron Street, at Chania, Crete, a small retail store, established in 1973. The second generation of owners, expressing the same passion, love and dedication to quality and professionalism, expanded business and thus in 1998, a privately-owned coffee processing & packaging plant, with a total surface of 1,700m², was constructed in Chania. Based on the new technological power offered by a factory equipped with state-of-the-art coffee roasting, milling and standardization machinery and selecting the finest raw coffee beans, which are imported directly, controlled to meet the most stringent specifications, "ARCHONTAKI" enterprise started supplying the Greek market with traditional greek coffee in various packages.

Since then and until today, "ARCHONTAKIS" enterprise has added to its range of products additional Greek coffee blends and has expanded to roasting espresso, filter - classic and aromatic - coffee.

With dedication as the base and using modern industrial equipment, "ARCHONTAKIS" range of products constitute the choice of major companies in the coffee service sector, of hotel units, supermarkets and companies involved with shipping & marine activities.

PROJECT DEMANDS

The biggest challenges for flooring systems in manufacturing facilities are generally in the production areas. These floors not only have to withstand severe exposure, including mechanical, chemical and thermal stresses, but also need to provide the right degree of slip resistance to meet health and safety requirements.

In manufacturing, in the food and beverage industries in particular, a clean flooring is obviously an essential requirement in order to provide a healthy working environment. In addition, dry process areas often require a balance or compromise between ease of cleaning and non-slip properties to meet efficiency, health, hygiene and safety requirements. The current guidelines for the construction and operation of a food processing plant further impose strict hygiene rules and use of zero-emission products, complying with CleanRoom suitability standards for indoor use.

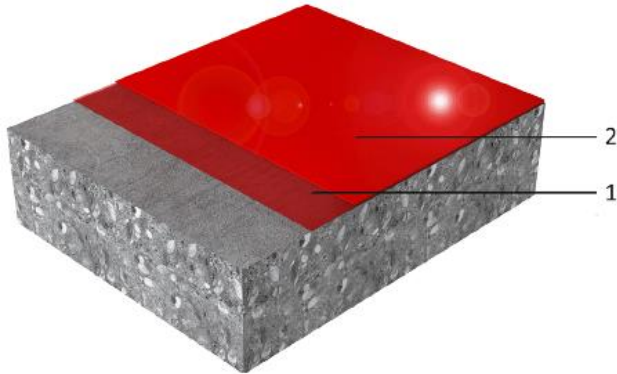
The new 4,000m² coffee, chocolate and confectionery processing and packaging plant, required the application of an industrial flooring system suitable for a dry food process food facility.

SIKA SOLUTION

For the industrial floor, **Sikafloor® MultiDur** system was proposed. **Sikafloor® MultiDur** systems are epoxy floor systems used in cases of high wear applications, as they feature excellent mechanical, chemical and abrasion resistance. These features are the main reasons for choosing these systems, without implying lack of aesthetics and broadness of color selections.

The system applied was **Sikafloor® MultiDur ES-24 N**. **Sikafloor® MultiDur ES-24 N** is a smooth, coloured, rigid, epoxy flooring system. It is a self-smoothing system for concrete and cement screeds with normal up to medium heavy wear e.g. storage and assembly halls, maintenance workshops, garages, loading ramps, e.t.c. as well as for good production and processing areas.

System structure of **Sikafloor® MultiDur ES-24 N**:

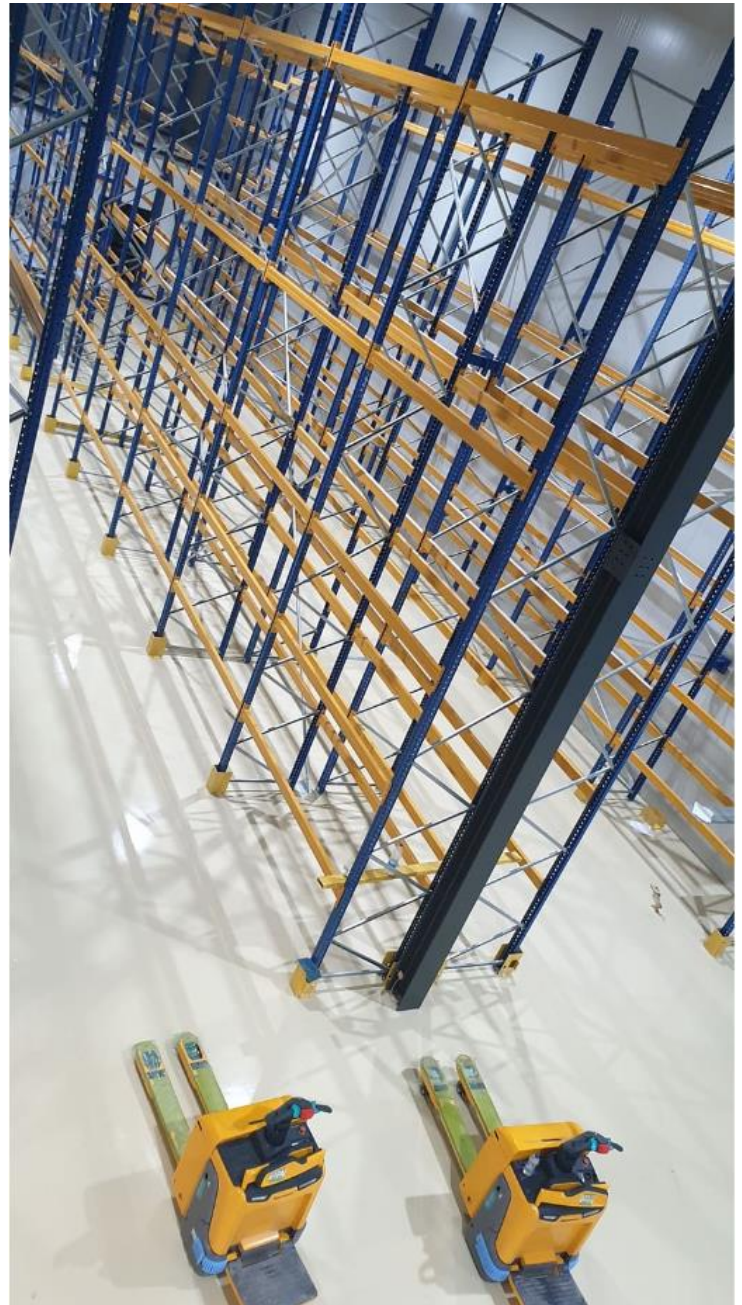


1. Primer	Sikafloor®-161
2. Wearing coat	Sikafloor®-263 SL N

It is crucial to point out that the final, self-leveling, epoxy wearing coat **Sikafloor®-263 SL N** complies with the most rigorous and specialized certification in terms of outgassing, particle emission and biological resistance for areas requiring a CleanRoom® Suitable Material.

The self-leveling, resin coating **Sikafloor®-263 SL N** carries CE marking and Declaration of Performance as a "Protective Concrete Coating" and it complies with the European Directive 2004/42 regarding limitation of VOC. Moreover, it carries a LEED certification, according to US EPA Method 24.

The 2-component hard-elastic, colored, polyurethane, mat, UV resistant, sealing coating **Sikafloor®-359 N** was applied to the external ramp of the unit.



PROJECT PARTICIPANTS:

Owner: **VASILEIOS ARCHONTAKIS S.A.**

Contractor: **VIODAP Kallitsounakis**



Our most recent General Sales Terms shall apply.
Please consult the most recent Product Data Sheets prior to any use and processing.



Sika Hellas ABEE
15 Protomagias Str.
145 68, Kryoneri
Attica - Greece

Contact
Tel.: +30 210 8160600
Fax: +30 210 8160606
www.sika.gr / sika@gr.sika.com

BUILDING TRUST

